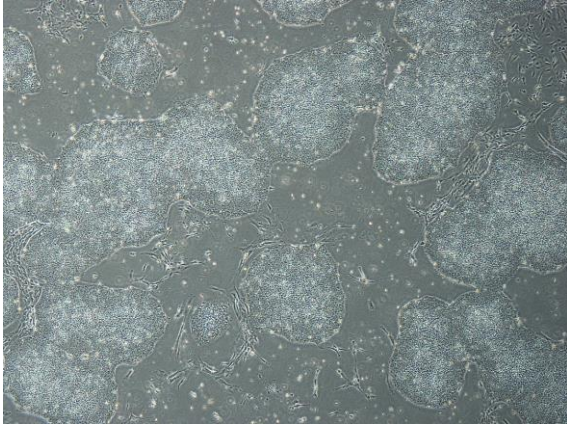
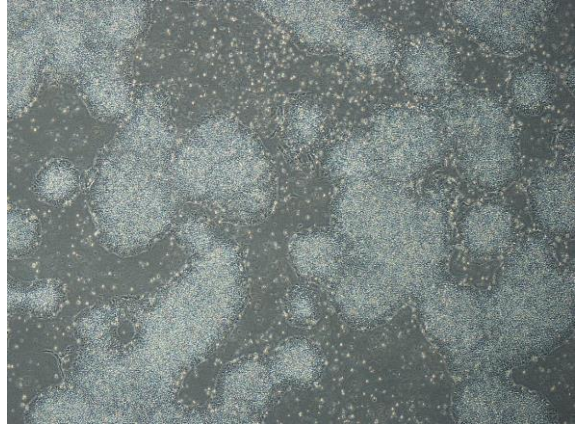


【 CiRA-j-1326 】 Morphology of iPSC colonies

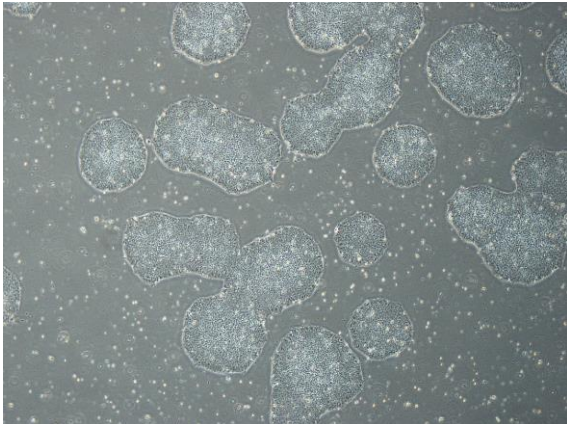
CiRA-j-1326-A: passage-3



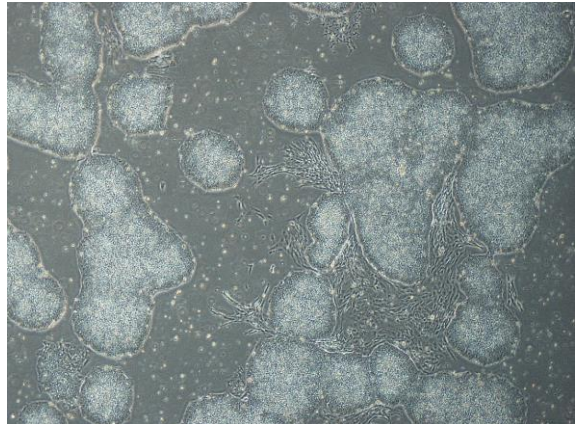
CiRA-j-1326-B: passage-3



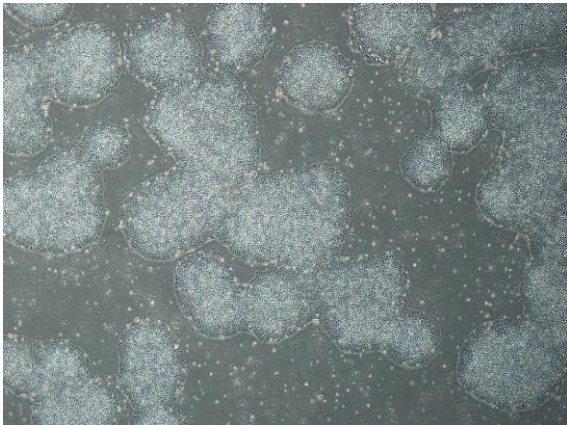
CiRA-j-1326-C: passage-3



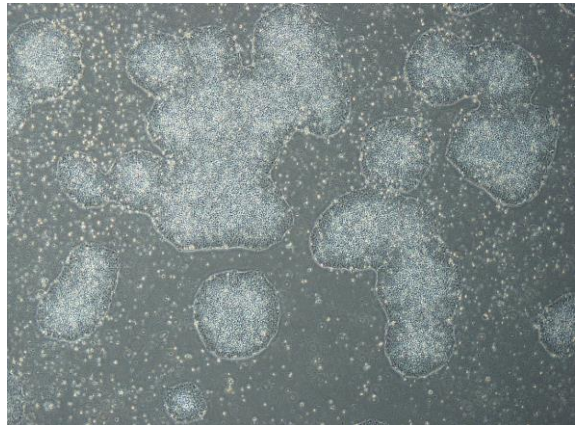
CiRA-j-1326-D: passage-3



CiRA-j-1326-E: passage-3



CiRA-j-1326-F: passage-3



(All images were captured at 4x magnification)